



**Semiconductor Products Sector**

Transportation and Standard Product Group

Analog Products Division

**PACKING LIST - KIT CONTENTS**

**KIT33887DWBEVB**

**H-Bridge Driver**

**QUANTITY**

**REVISION**

**1 CD - ROM**

**0.0**

Documentation Package for KIT33887DWBEVB

Notice

----

Instructions

0.0

EVb setup diagram

0.0

Schematic Drawing

0.0

Assembly Drawing

0.0

PCB - Top copper

0.0

PCB - Bottom Copper

0.0

Bill of Material

0.0

MC33887/D Data Sheet

7.0

MC33887FS/D Fact Sheet

2.0

APDPAK/D Analog Portfolio Package

----

Motorola Analog Web Page Link

ON Semiconductor Web Page Link

----

**1 KIT33887DWBEVB EVALUATION BOARD**



## ***Semiconductor Products Sector***

*Transportation and Standard Product Group*

*Analog Products Division*

---

### **IMPORTANT NOTICE**

---

**Motorola provides the enclosed product(s) under the following conditions:**

**This evaluation kit is intended for use of ENGINEERING DEVELOPMENT OR EVALUATION PURPOSES ONLY.** It is provided as a sample IC pre-soldered to a printed circuit board to make it easier to access inputs, outputs, and supply terminals. This EVB may be used with any development system or other source of I/O signals by simply connecting it to the host MCU or computer board via off-the-shelf cables. This EVB is not a Reference Design and is not intended to represent a final design recommendation for any particular application. Final device in an application will be heavily dependent on proper printed circuit board layout and heat sinking design as well as attention to supply filtering, transient suppression, and I/O signal quality.

The goods provided may not be complete in terms of required design, marketing, and or manufacturing related protective considerations, including product safety measures typically found in the end product incorporating the goods. Due to the open construction of the product, it is the user's responsibility to take any and all appropriate precautions with regard to electrostatic discharge. In order to minimize risks associated with the customers applications, adequate design and operating safeguards must be provided by the customer to minimize inherent or procedural hazards. For any safety concerns, contact Motorola sales and technical support services.

As a prototype, this product does not fall within the scope of the European Union directive on electromagnetic compatibility and therefore may not meet the technical requirements of the directive. Please be aware that the products received may not be regulatory compliant or agency certified (FCC, UL, CE, etc.).

Should this evaluation kit not meet the specifications indicated in the kit, it may be returned within 30 days from the date of delivery and will be replaced by a new kit.

Motorola reserves the right to make changes without further notice to any products herein. Motorola makes no warranty, representation or guarantee regarding the suitability of its products for any particular purpose, nor does Motorola assume any liability arising out of the application or use of any product or circuit, and specifically disclaims any and all liability, including without limitation consequential or incidental damages. "Typical" parameters can and do vary in different applications and actual performance may vary over time. All operating parameters, including "Typical", must be validated for each customer application by customer's technical experts.

Motorola does not convey any license under its patent rights nor the rights of others. Motorola products are not designed, intended, or authorized for use as components in systems intended for surgical implant into the body, or other applications intended to support or sustain life, or for any other application in which the failure of the Motorola product could create a situation where personal injury or death may occur.

Should Buyer purchase or use Motorola products for any such unintended or unauthorized application, Buyer shall indemnify and hold Motorola and its officers, employees, subsidiaries, affiliates, and distributors harmless against all claims, costs, damages, and expenses, and reasonable attorney fees arising out of, directly or indirectly, any claim of personal injury or death associated with such unintended or unauthorized use, even if such claim alleges that Motorola was negligent regarding the design or manufacture of the part.

Motorola and the encircled stylized M and/or stylized M image contrasted on a disk shape are registered trademarks of Motorola, Inc. Motorola, Inc. is an Equal Opportunity/Affirmative Action Employer. MOTOROLA and the Stylized M Logo are registered in the US Patent and Trademark Office. All other product or service names are the property of their respective owners.

© Motorola, Inc. 2002

---



***Semiconductor Products Sector***

*Transportation and Standard Product Group*

*Analog Products Division*

---

**INSTRUCTIONS**

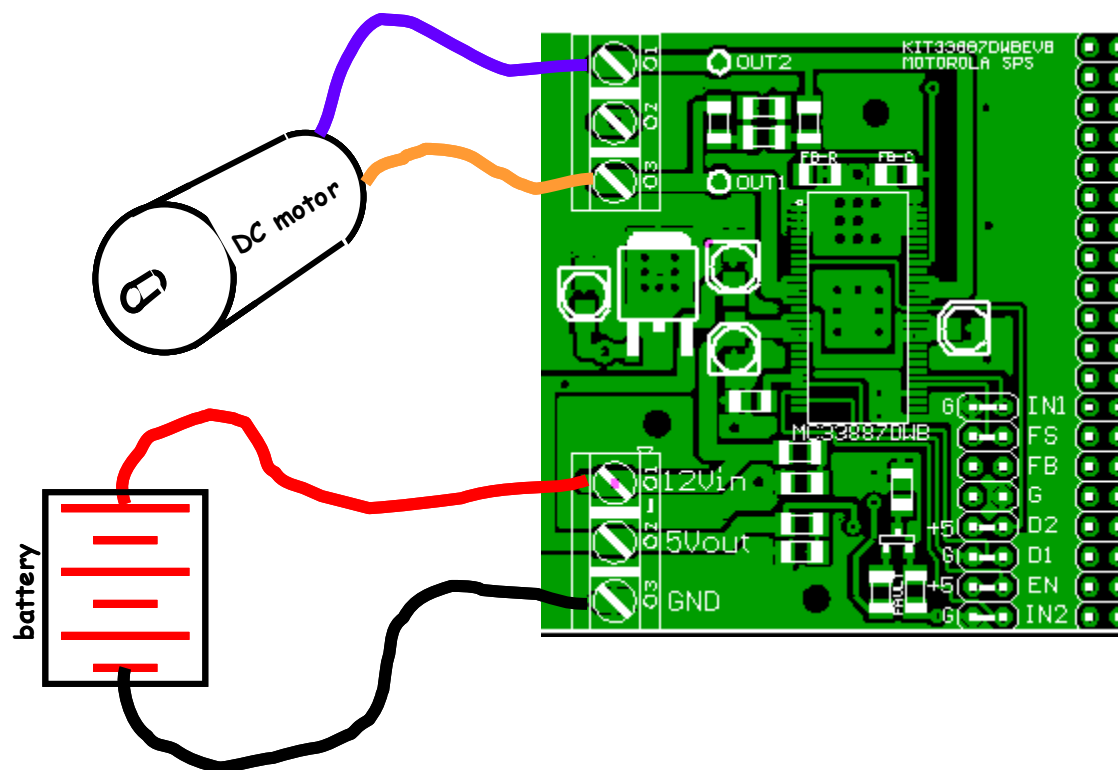
**KIT33887DWBEVB**

**Using the EVB**

**Warning: Always wear Safety Glasses when working around electronic modules and when soldering.**

1. The KIT33887DWBEVB Evaluation board allows the customer to quickly evaluate features of the device with a simple bench top setup.
2. Terminal blocks are provided for easy hook-up of power and loads. Strip wire ~ 0.25" before inserting into terminal block, then tighten down the screw until the wire is snug. Apply a voltage between 5V and 35V to the terminal labeled "12Vin", and apply the ground return to the terminal labeled "GND". The board has a built-in 5v regulator, and up to 500mA may be drawn from the terminal labeled 5Vout, if desired.
3. Jumpers are provided at the I/O 2X8 pinheader to provide quick set-up of the enable, disables, and inputs. Alternatively, an uncommitted 2X20 pin header is provided to which the I/O may be wirewrapped in any desired pinout. This 2X20 pin header will then accept standard 40 pin flat ribbon cables to provide connection to various Metrowerks Development Systems.
4. To turn on a load in one direction, the inputs should be set as follows: D1 to ground, D2 to +5v, EN to +5v, IN1 to +5v (or left floating, as it has internal pullups to +5V), and IN1 to ground. To run current through the load in the opposite direction, reverse the logic states of IN1 and IN2. (Note: Logic One > 3.3V, Logic Zero <1.4V.)
5. To control the load via PWM, apply a PWM pulse train to either IN1 or IN2, while holding the other INput at a steady-state logic level. Swapping the signals applied to IN1 and IN2 will provide control in the opposite direction.
6. A Fault Status indicating LED is included on the board, and can be connected to the Fault Status flag output by placing a jumper over the two pins opposite the FS label on the 2X8 pin header. By so doing, the FAULT LED will light whenever the IC encounters any of the following fault conditions: Over Temperature, Shorted Load, Under Voltage. The LED will remain lit until the IC's fault status flag is reset by one of the following means: toggling D1, toggling D2, toggling EN, or removing then reapplying power.

REVISIONS			
REV	DESCRIPTION	DATE	APPROVED
0	ORIGINAL	7/30/2003	LM



**Semiconductor Products Sector**  
 Transportation and Standard Product Group  
 Analog Products Division

THIS DOCUMENT CONTAINS INFORMATION  
 PROPRIETARY TO MOTOROLA AND SHALL NOT BE  
 USED FOR ENGINEERING DESIGN, PROCUREMENT OR  
 MANUFACTURE IN WHOLE OR IN PART WITHOUT  
 CONSENT OF MOTOROLA.

TITLE

**SETUP33887DWBEVB**

REV

0

REVISIONS			
REV	DESCRIPTION	DATE	APPROVED
0	ORIGINAL	7/30/2003	LM

# KIT33887DWBEVB EVALUATION BOARD

## EVALUATION BOARD LIMITS:

Minimum Input Voltage > 8V

Maximum Input Voltage < 20V

Minimum Load Resistance > 2 ohm

Minimum Short Circuit Resistance > 0.5 ohm

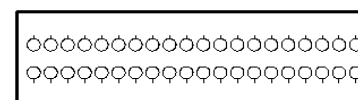
Maximum Steady State Current < 3A

Maximum PWM Frequency < 15kHz

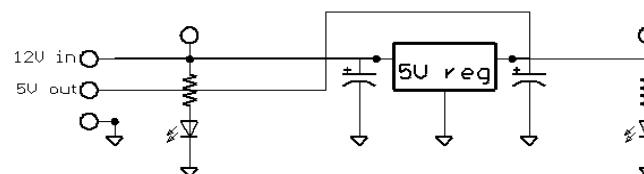
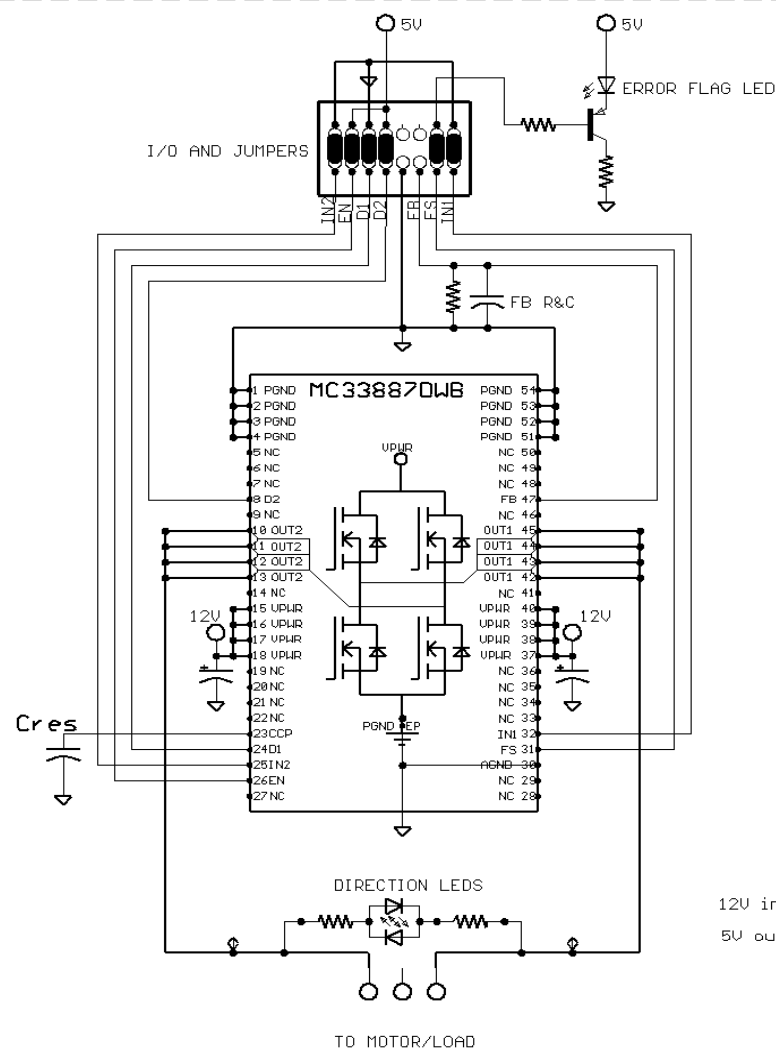
Maximum Ambient Temperature < 85 C

Minimum Ambient Temperature > Dewpoint

Maximum Shock < 20G



Uncommitted 40pin header



**Semiconductor Products Sector**  
Transportation and Standard Product Group  
Analog Products Division

THIS DOCUMENT CONTAINS INFORMATION  
PROPRIETARY TO MOTOROLA AND SHALL NOT BE  
USED FOR ENGINEERING DESIGN, PROCUREMENT OR  
MANUFACTURE IN WHOLE OR IN PART WITHOUT  
CONSENT OF MOTOROLA.

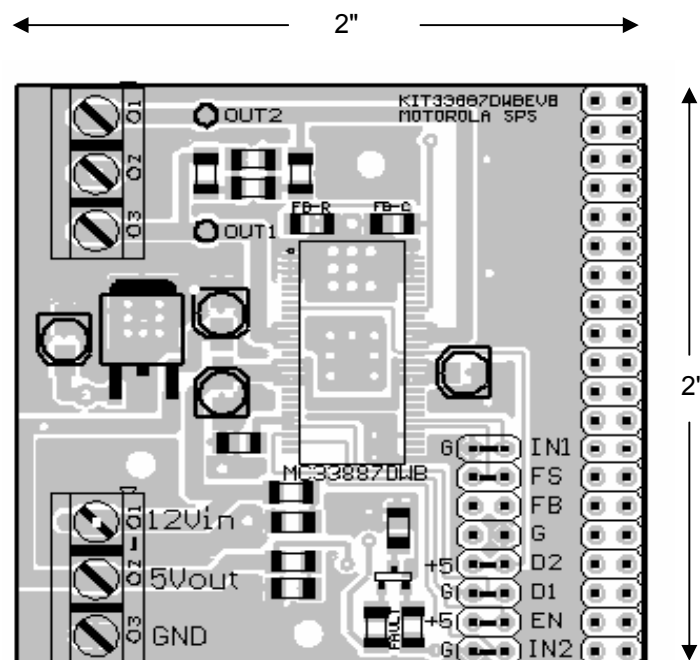
TITLE

**SCH33887DWBEVB**

REV

0

REVISIONS			
REV	DESCRIPTION	DATE	APPROVED
0	ORIGINAL	7/30/2003	LM



**Semiconductor Products Sector**  
 Transportation and Standard Product Group  
 Analog Products Division

THIS DOCUMENT CONTAINS INFORMATION  
 PROPRIETARY TO MOTOROLA AND SHALL NOT BE  
 USED FOR ENGINEERING DESIGN, PROCUREMENT OR  
 MANUFACTURE IN WHOLE OR IN PART WITHOUT  
 CONSENT OF MOTOROLA.

TITLE

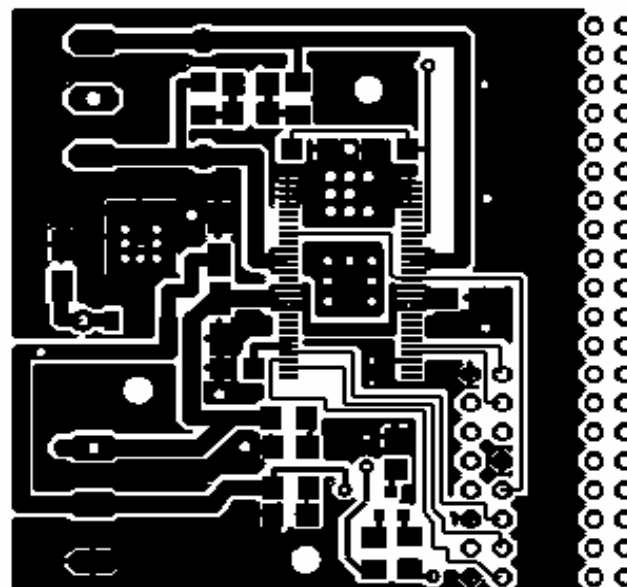
**ASSY33887DWBEVB**

REV

0

NOTES:  
1. TOP COPPER

REVISIONS			
REV	DESCRIPTION	DATE	APPROVED
0	ORIGINAL	7/30/2003	LM



*Semiconductor Products Sector*  
*Transportation and Standard Product Group*  
*Analog Products Division*

THIS DOCUMENT CONTAINS INFORMATION  
PROPRIETARY TO MOTOROLA AND SHALL NOT BE  
USED FOR ENGINEERING DESIGN, PROCUREMENT OR  
MANUFACTURE IN WHOLE OR IN PART WITHOUT  
CONSENT OF MOTOROLA.

TITLE

**PWB33887DWBEVB**  
**TOP**

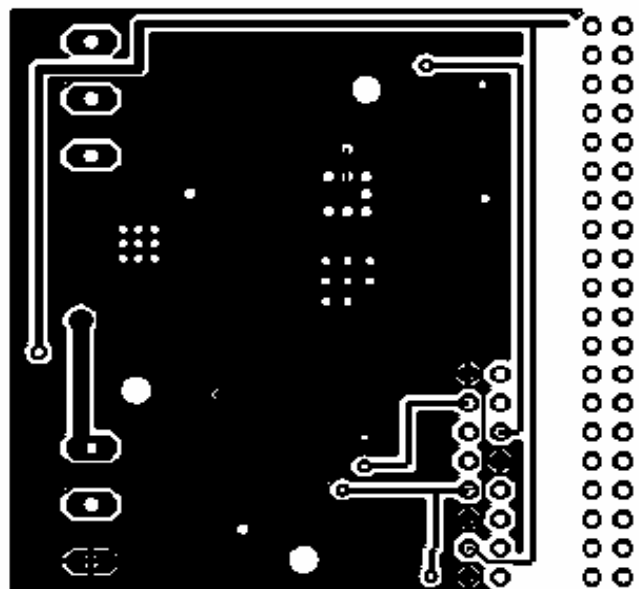
REV

0

NOTES:

1. BOTTOM COPPER (AS SEEN THRU BOARD LOOKING FROM THE TOP)

REVISIONS			
REV	DESCRIPTION	DATE	APPROVED
0	ORIGINAL	7/30/2003	LM



*Semiconductor Products Sector  
Transportation and Standard Product Group  
Analog Products Division*

THIS DOCUMENT CONTAINS INFORMATION  
PROPRIETARY TO MOTOROLA AND SHALL NOT BE  
USED FOR ENGINEERING DESIGN, PROCUREMENT OR  
MANUFACTURE IN WHOLE OR IN PART WITHOUT  
CONSENT OF MOTOROLA.

TITLE

**PWB33887DWBEVB  
BOTTOM**

REV

0



Analog Products Division

**KIT33887DWBEVB**

REVISION 0

## H-Bridge Driver

[illegible]